

INTEGRA Version 2.1.0 Firmware Release

Ag Leader Technology is pleased to announce the release of INTEGRA firmware. Features and improvements in this version are listed below. This free upgrade is available for download from <http://www.agleader.com>.

ISOBUS

- **NEW: Compatibility with the ISO 11783 (ISOBUS) Virtual Terminal standard**
Note: Does not include support for variable rate prescription map, Autoswath, or data logging functionality. These enhancements will be provided in future Integra ISOBUS support updates.

DirectCommand (Application)

- **NEW: OptRx crop sensor nitrogen algorithm for North America wheat**
- **NEW: OptRx crop sensor nitrogen algorithm for Europe wheat**
- **NEW: Rate Error Alarm Threshold and Timeout settings Liquid Control module**
- **NEW: CFR settings lookup table for Spinner Spreader and Strip-Till configurations**
- **NEW: Warning for when Product is not calibrated for Strip-Till and Spinner Spreaders**
- **NEW: Clutch and linear actuator control for ground drive air cart (Strip-Till Module)**
- **NEW: Meter Prime routine for Strip-Till operations**
- **ENHANCED: Increase max gate height threshold for litter application (Spinner Spreader Module)**

SeedCommand (Planting)

- **NEW: Advanced Seed Monitoring for corn planting with Ag Leader Seed Tube Monitor Module.** New bar graphs and display items include: Planter Average Singulation and Spacing Quality, Number of Skips and Doubles on a planter average and individual row basis, and unique Virtual Seed Trench.
- **NEW: Split-planter configurations now allow using the same Variety on multiple sections**
- **NEW: KINZE Planter Monitor Module (PMM) Reset button to clear muxbus addresses**
- **ENHANCED: Alarm for KINZE PMM clutch detection failure**
- **ENHANCED: Calibration routine for ASD with KINZE planter**
- **ENHANCED: Gaps have been reduced on coverage map when using AutoSwath (see Service Bulletin TSB-003023)**

Harvest

- **NEW: Vibration calibration is now presented at run screen when activating configuration**

Guidance

- **NEW: Support for OnTrac2 steering system**
- **NEW: Allow editing OnTrac2 Minimum Output setting outside of calibration wizard**
- **NEW: Support for saving and restoring OnTrac2 vehicle database through display backup**
- **NEW: With ParaDyme, allow vehicle icon to back up while reversing**
- **NEW: Ability to download log files and vehicle database to display USB from ParaDyme**
- **NEW: Set A+ guidance pattern using the vehicle's current degree heading**
- **NEW: Support for importing .PAT files from the .MSF file created by desktop software**
- **ENHANCED: SmartPath guidance now allows up to 10 A-B lines**

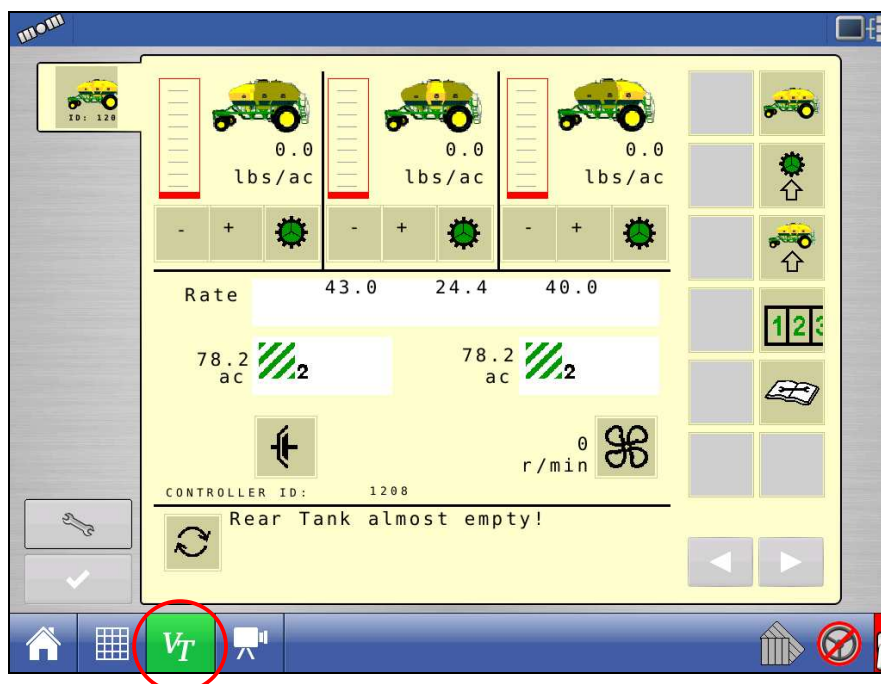
GPS

- **NEW:** Support for new Ag Leader GPS2500 smart antenna/receiver with OmniSTAR and GLONASS capability.
- **NEW:** Configuration of Port A & B with GPS1500 and GPS2500
- **NEW:** User-selection of WAAS/EGNOS PRN with GPS1500 and GPS2500

User-Interface Improvements

- **NEW:** Reference maps stored in the display for previous seasons can be loaded in as a background map (was previously limited to the current season)
- **NEW:** Products can be created in the Field Operation Wizard
- **NEW:** Vehicle GPS Offsets are displayed in Operating Configuration Wizard and can be edited for the selected vehicle
- **NEW:** Area logging status icon added to (non-controlled) product tabs on map screen
- **ENHANCED:** On-screen map will now exclude undesired log points outside of the field operation that previously required "Clear Bounds"
- **ENHANCED:** Larger setup and diagnostic screens, enhanced icons, and larger text
- **ENHANCED:** Summary screen is now full screen
- **ENHANCED:** Active operating configuration is highlighted by default in equipment setup
- **ENHANCED:** Grower, Farm, and Field has been combined into one tab in management setup
- **ENHANCED:** Configurations and Products are now grouped by type in setup
- **ENHANCED:** GPS diagnostics screen now has a tabbed interface
- **ENHANCED:** Camera button on task bar cycles through camera inputs when pressed

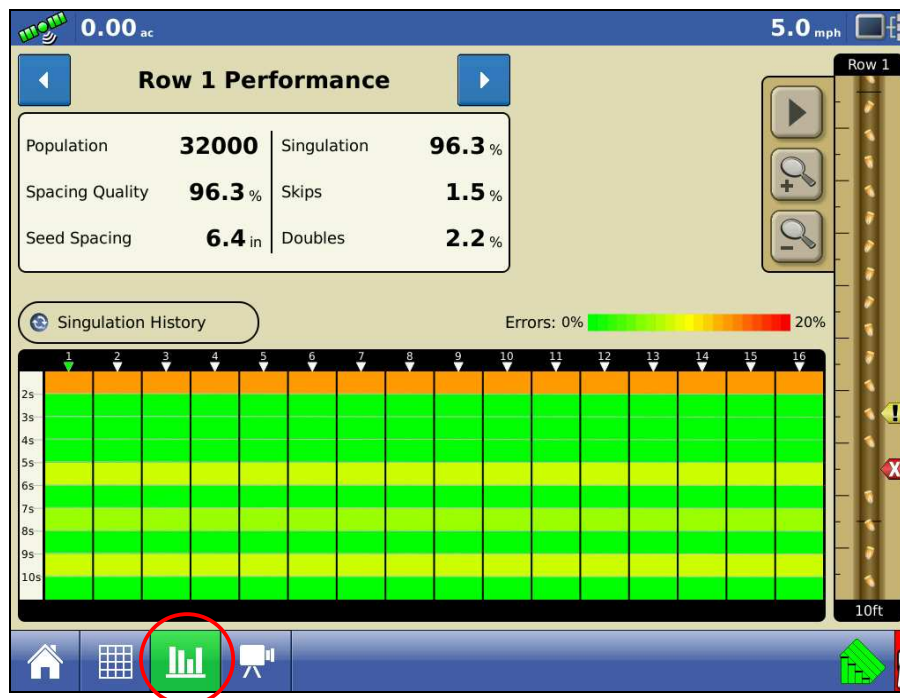
ISOBUS Virtual Terminal Screen (JD Air Seeder shown)



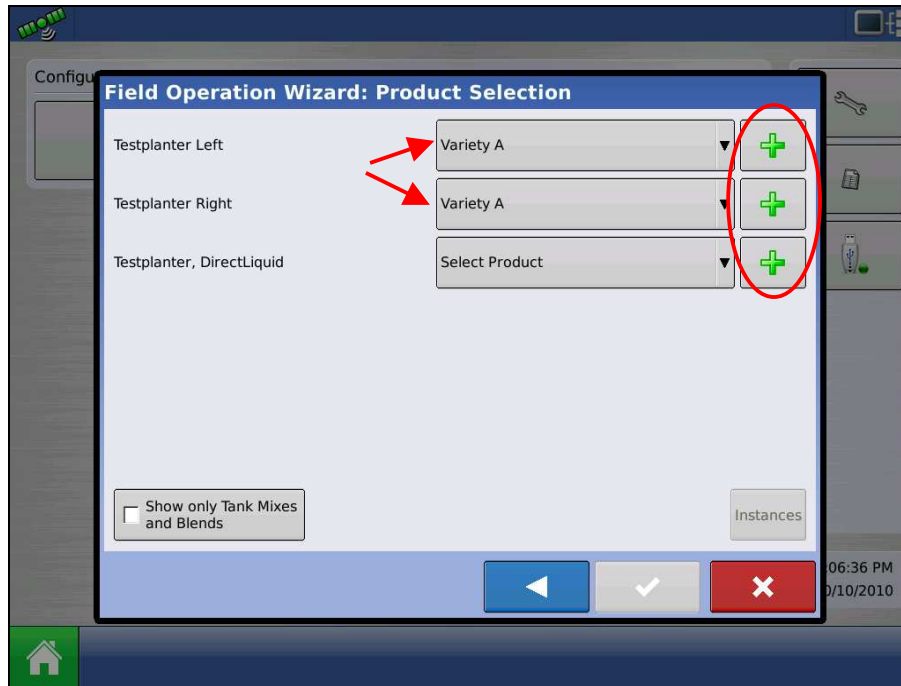
Advanced Seed Monitoring – Planter Performance Screen



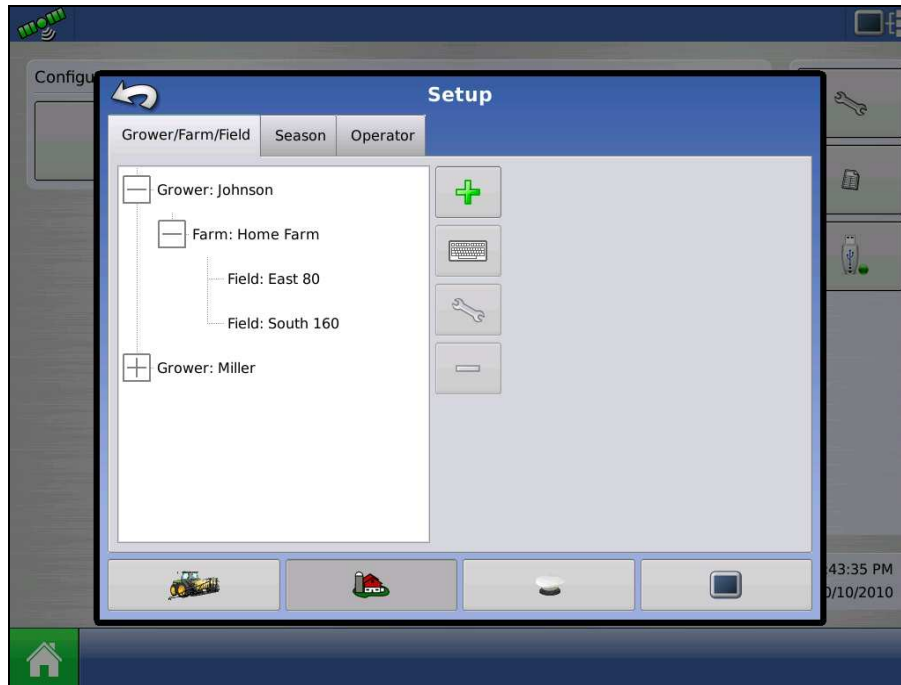
Advanced Seed Monitoring – Row Performance Screen



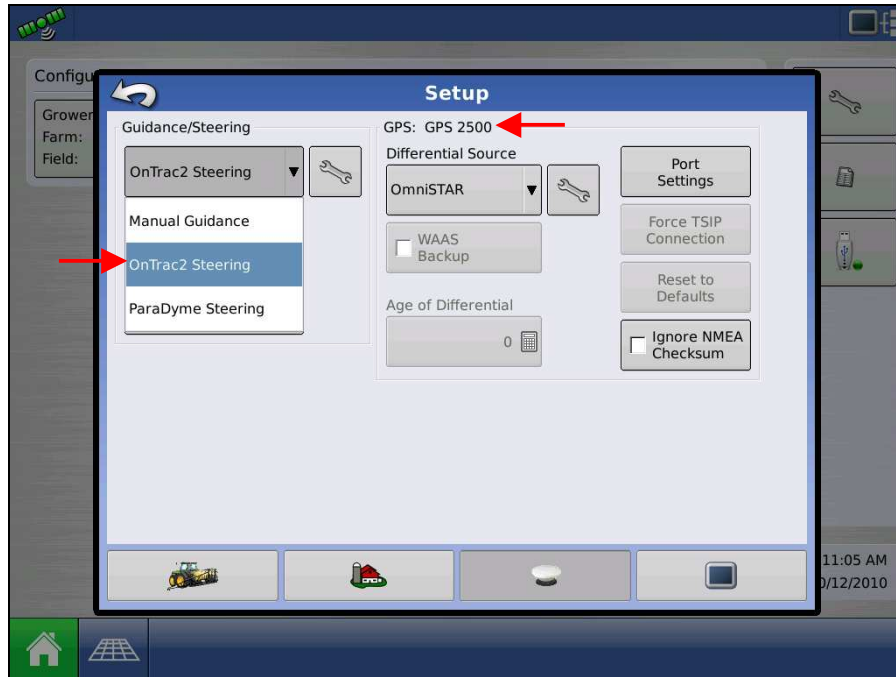
Add Products Through Field Operations Wizard & Use Same Product on Multiple Sections of Split Planter



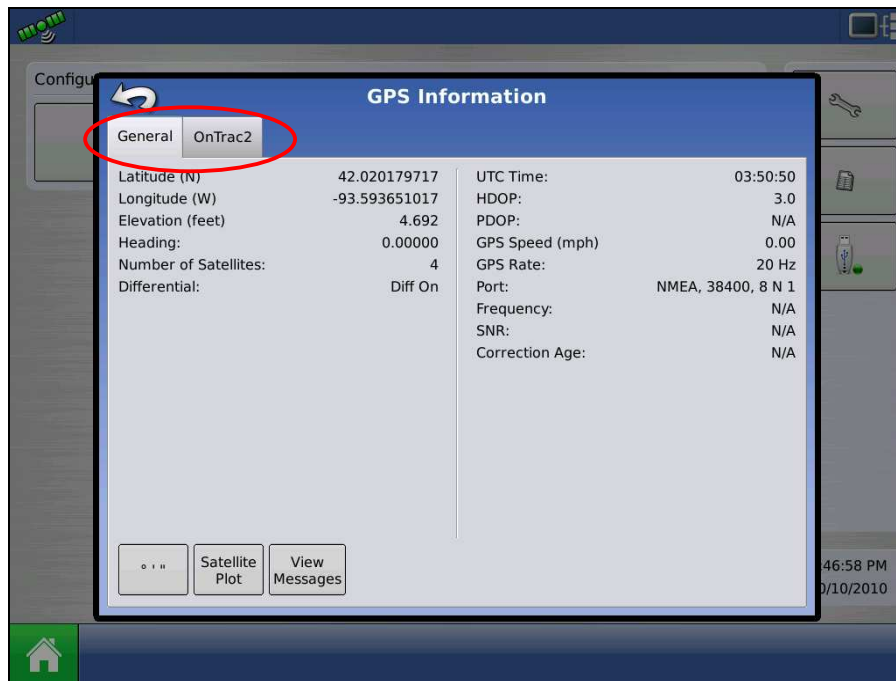
Grower-Farm-Field List Tree



OnTrac2 and GPS2500 Setup



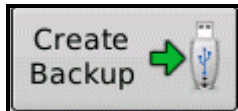
GPS Diagnostic Tabs




Instructions for updating:

1. Copy the latest upgrade file to your external USB drive. It will have a .fw2 file extension.
2. Insert the external USB drive in the display.

3. Press  then  then **Advanced tab**, and then press




4. When it asks you "Do you wish to back up all data to the external storage device?" Press **YES**.


5. When the "Backup is Complete" message appears, press .

6. Then press .

7. Then press .

8. Then press .

9. When the upgrade dialog box appears, select the .fw2 upgrade file, then press .

10. A window will appear and will state that "The upgrade is ready to install". It will also warn, "Do not disconnect power" and then press .

11. The display will progress through the upgrade steps, the display will automatically power cycle during the upgrade.

12. The upgrade is now complete.